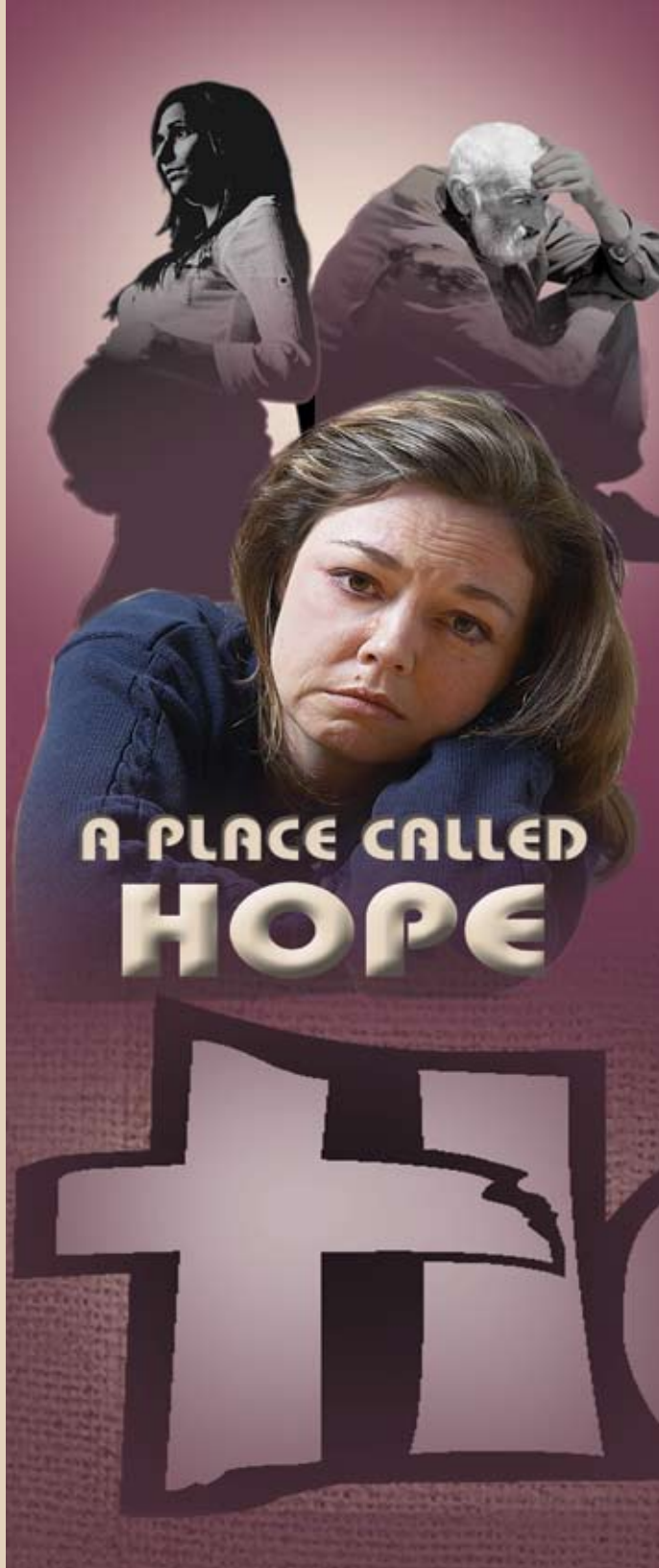


Non-profit
U.S. Postage
PAID
Permit #130
Enid, OK



A PLACE CALLED
HOPE

Where You Can Find Hope From the Executive Director's View

Imagine awaking early every single morning, fearing and dreading to face your desperate situations without hope. A young girl knows she must tell someone that she is pregnant. A mother knows that today her heat will be cut off. A lonely man, depressed and homeless, can barely find reason enough to care for himself today.

Do you know someone who faces similar circumstances? If you do, tell them there is a place they can go. It is a place called Hope, Hope Outreach. The ministries there are in the business of helping and empowering people to make better choices and build better lives through the love of Christ in action.

These ministries can help a pregnant teenager transform her fearful expectations into a beautiful, productive life with assistance of the Parenting Ministry. At the Community Care and Homeless Ministry, families trying to survive will find encouragement and assistance at the Day Center and Faith Farm, Homeless and dependent folks also will find shelter and resources there, during the day to help them with their struggles.

These valuable ministries are what the Hope Outreach Thrift Store is all about. The store is the engine that drives the organization. It is a place where shoppers can purchase bargain-priced, new and nearly new, merchandise and at the same time provide funding for these unique programs, support for those in need and hope where there was none!

Stop by, sometime soon. Let us show you how your support helps make this ministry, a place called Hope.

Marty Kalow, Executive Director



Understanding The Needs for Hope

Are you aware that...

- an estimated 6,700 people in Enid are living at or below the poverty level?
- of these, approximately 600 are actually homeless or "hidden homeless" (dependent upon others for shelter)?
- the greatest impact of life in poverty is felt by children of the needy?
- that a reported 19.7 percent of the children in Garfield County are living at or below the poverty level? (Data: OK Kids Count 2002).

That's one in every 5 kids!

These numbers represent real people, people in our community who struggle every day as they face the impossible odds of making ends meet.

Today, through education, job opportunities and assistance services, this organization is literally changing the quality of lives with the power of hope. Thousands of folks in need have found personal and material assistance at a place called Hope.

How does that happen?



P.O. Box 1067
Enid, Oklahoma 73702

Empowering the People

The needs of those who seek hope are as unique and complex as the individual themselves. That is why the Hope Outreach ministries help each one to overcome their own personal challenges with dignity by providing opportunities for them to help themselves.

Community Care & Homeless Ministry (CCHM) provides work for their clients in exchange for goods and vouchers. They enroll in the program to work in the warehouse, thrift store and Faith Farm garden. These services also help the homeless, when they register at the Day Center for laundry, showers, and supplies.



Families with children in crisis are special opportunities to nurture the future of our community. That is why one important focus of Hope in these situations is on helping teenagers and their families with the special challenges of pregnancy, birth, and parenting through the services at the Parenting Ministry (PM).

A free and confidential pregnancy test is provided. Those who are dealing with a pregnancy crisis may choose to participate in the free Earn While You Learn parent-training classes, conducted by caring mentors of the community. There they can gain the skills they need for birthing, parenting and managing a household and their own young lives.



Assistance is also available for grandparents who may be rearing grandchildren.

Opportunities like these empower teenagers, families and single adults with options to turn desperate circumstances into positive action that results in a better quality of life.

Empowering Hope

There is so much to be done. Our staff can't do it alone. Hope Outreach ministries begin, and continue, with you!

Remember Hope Outreach in planning your will, family trust, or endowment. Financial contributions are generally tax deductible.

Those who give, whether the gift be of time, skills, "stuff," or financial support, are themselves empowered as well. By their actions they help to change lives of desperation into lives of hope, and in the process they improve the overall quality of life in the Enid community. Any gift to Hope Outreach truly becomes an investment in God's work among His people.

"...whatever you did for one of the least of these brothers of mine, you did for me."

Matthew 25:40 (NIV)



THRIFT STORE & Main Office
215 S. Van Buren • 580.237.4673
Mailing Address: P.O. Box 1067 • Enid, OK 73702
Store Hours: 9 a.m. - 7 p.m.
Monday - Saturday • Closed Sundays

Parenting Ministry Center
815 W. Broadway • 580.237.2292

Community Care & Homeless Ministry
815 W. Maine • 580.237.4800
Faith Farm Garden • 820 W. Cherokee

Department of Volunteer Efforts (DOVE)
215 S. Van Buren • 580.237.4673

Find us on the web...
www.hopeoutreach.org



Hope Outreach is a non-denominational, not-for-profit 501(c)(3) Oklahoma corporation. All contributions and merchandise donations are tax deductible.

From the Ministries of HOPE



Community Care & Homeless Ministry Director

A graduate of NWOSU and Dallas Theological Seminary, Leland Streck was serving as a senior pastor in Nebraska prior to becoming director of CCHM in 2007. Leland understands people's needs. Compassionately, he networks the community to provide tools of hope.



Kate Morrison, Faith Farm Coordinator and Master Gardener, has nurtured the Faith Farm concept to serve as a workplace of encouragement for the disadvantaged, including the homeless.



Sandie Hamilton, Coordinator of Community Care assistance services, whose positive attitude helps people overcome their challenges with jobs, personal needs and restore a sense of hope in their lives.



Parenting Ministry Director

A professional music educator and experienced parent herself, Ann Price leads the Parenting Center staff with a vigor and enthusiasm for helping young people prepare for the responsibility of a new baby, parenthood and a household.



The Earn While You Learn program's Coordinator, Glenda Aebi, fills a weekly schedule of over 60 teenagers and young women who need to know there is a place where they can find help in desperate times. She recruits and guides volunteer mentors who lead them through the challenges they will likely be facing.



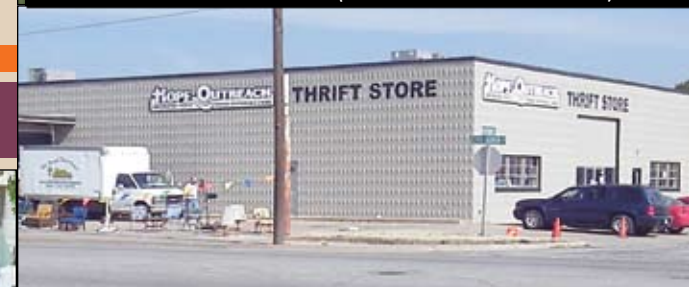
815 West Broadway



815 West Maine



820 West Cherokee (1 blk East of the Thrift Store)



215 South Van Buren (W. Maine & W. Cherokee)

4 WAYS YOU CAN GIVE HOPE

1

Donate!

Free pickup for Enid residents! Your goods keep our shelves well stocked.



2

Pray!

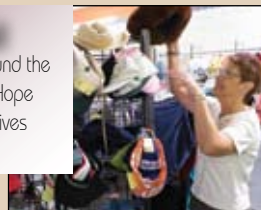
Your prayer of faith gives hope where it is needed. Keep it coming, please.



3

Shop!

Store sales fund the ministries of Hope for restoring lives every day.



4

Volunteer!

From a simple smile to an act of service, your time given in love is priceless.

